



January 17, 2017

Enrollment Balancing Project Board Advisory Committee Meeting Recap

Superintendent, Trisha Kocanda, welcomed the Committee and shared her appreciation for its work on behalf of the community.

Maureen Hager, Project Manager, reiterated the charge of the Committee to begin the meeting. The charge included:

- ❑ *Determine the best way to address space and program relief at Crow Island*
- ❑ *Determine the best way to offer Extended Day Kindergarten in the short-term, with an eye toward the long-term*
- ❑ *Identify viable options and prioritize these options to address the long-term enrollment forecast and facility use*

She noted that the goal for the evening would be to determine a final recommendation to the School Board and discuss the presentation and final report the Committee will share with the School Board on January 24, 2017.

Daniel Ryan, *Assistant Superintendent of Human Resources and Professional Learning*, shared illustrative data demonstrating the enrollment imbalance among the three elementary schools. Expected relief outcomes were shared for both Model 1 and 2.

After discussing additional considerations regarding the models under review, the Committee voted to move forward and recommend Model 1 (*All Crow Island Kindergarten students attend another District school*) to the School Board. If this option is approved by the School Board, Crow Island Kindergarteners will be welcomed at Hubbard Woods and Greeley Schools for the 2017-2018 school year. This short-term option is expected to be in place for one or two years while the long-term enrollment balancing solution is being addressed.

The Committee will share this recommendation with the School Board at a 5:00 p.m. Work Session at its Meeting on January 24, 2017, at Hubbard Woods School. The Board will vote on this recommendation at its February 21, 2017, Regular Meeting.

Please note, formal detailed Meeting Minutes will be approved by the School Board at the February 21, 2017, Meeting.



Enrollment Balancing Project

January 17, 2017

The Winnetka Public Schools community empowers every student to flourish in an innovative, experiential environment. We support and challenge all learners to actively engage in continual growth and achievement to make a meaningful difference in the world.

What is our charge?

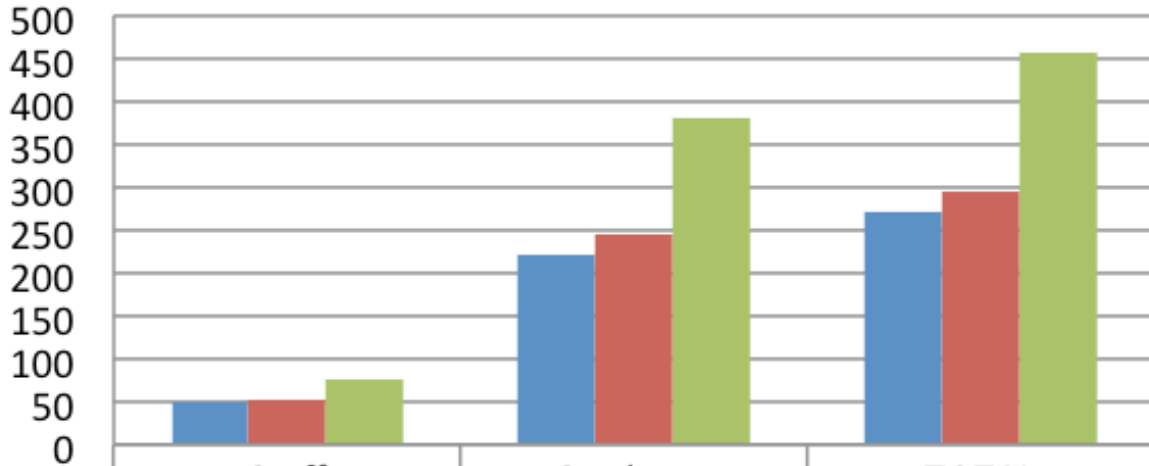
- ❑ Determine the best way to address space and program relief at Crow Island
- ❑ Determine the best way to offer Extended Day Kindergarten in the short term, with an eye toward the long term
- ❑ Identify viable options and prioritize these options to address the long-term enrollment forecast and facility use (context)

Guiding Norms: Developed September 2016

- Commit to attending all meetings and arrive prepared to participate.
- Be creative when brainstorming potential solutions; think “outside of the box”.
- Speak up at meetings and share your views with the entire committee; recognize the importance of listening to all voices.
- Be open to alternative perspectives and ideas.
- Respect the comments, ideas, and views of the community at-large.
- Consider what is best for the community focusing on what the best outcome for the children of this community.
- Learn about the context of enrollment issues from those with first-hand knowledge (e.g. building principals, teachers)
- Ask for clarity when unsure of message or information.
- When emotions are high, insert a brief pause into the process to allow rational mindsets to return.
- Agree on a process to determine consensus of Committee when required.
- Accept previously determined School Board direction when relevant.
- Treat other committee members with respect during and outside of meetings.
-
- Check email communication periodically for any messages related to Committee Work.
- is
- Use whiteboards during meetings to provide visual record of ideas under discussion to facilitate dialog and avoid repetition.
- Unless authorized by the Committee, no one individual speaks on behalf of the Committee.

Illustrative Data: Enrollment Imbalance

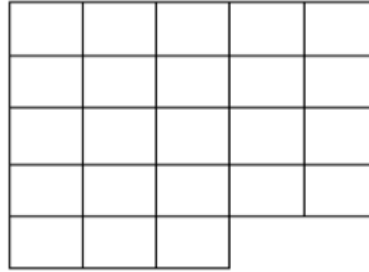
Total Persons in School



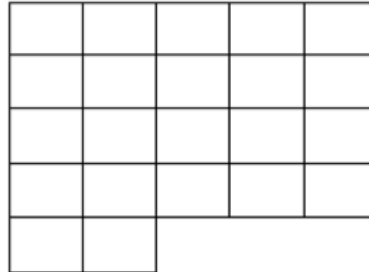
	Staff	Students	TOTAL
■ Greeley	50	222	272
■ Hubbard Woods	51	244	295
■ Crow Island	77	380	457

As of 9/2016

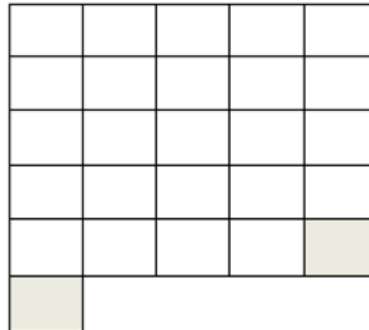
Population Density of Schools



Greeley
272 persons
23 Class Spaces
12:1



Hubbard Woods
295 persons
22 Class Spaces
13:1



Crow Island
457 persons
24 (26) Class Spaces
19:1 (18:1)

Specials Scheduling

CROW ISLAND
120 hours of
specials a
week

Hubbard Woods &
Greeley
83 hours of
specials a
week

Difference = 37 more hours a week
at Crow Island
impacting space and schedule

Greeley School Flexible & Special Ed Space

- Currently six classroom spaces available for flexible use
- Three special education classrooms

Hubbard Woods School Flexible & Special Ed Space

- Currently four classroom spaces available for flexible use
- Two special education classrooms

**Crow
Island
School
Flexible &
Spec Ed
Space**

- Currently no classroom spaces available for flexible use
- Three special education classrooms

Models Under Consideration

Model 1: All Crow Island Kindergarten students attend another school

Welcomed at Greeley and Hubbard Woods Schools

Model 2: Some Crow Island Kindergarten students attend another school with one or two EDK section at Crow Island

Some students welcomed at Greeley and Hubbard Woods Schools

EBP Report to the School Board January 24

Section 1: Executive Summary

Section 2: Background

Section 3: Advisory Committee

Section 4: Rationale and Recommendation

Section 5: Notes to the Board

Section 6: Appendix

Q & A



ENROLLMENT BALANCING PROJECT ANALYSIS OF MODELS ONE AND TWO

1. All Crow Island Kindergarten students attend another school.

Students welcomed at Hubbard Woods and Greeley Schools.

Facility Relief	Enrollment Relief	Schedule Relief	Staffing Relief	Other Relief
<ul style="list-style-type: none"> ● Opens up 2 classrooms for special education, specials, or multi-purpose ● Does not add to lunch or gym space needs ● Less drop-off congestion 	<ul style="list-style-type: none"> ● ~75 fewer students (~20%) 	<ul style="list-style-type: none"> ● ~Nine fewer hours of specials and staff to schedule ● No change to KW schedule 	<ul style="list-style-type: none"> ● Reduces need for traveling art and music teachers ● Reduces 2 teachers and 2 associates in bldg 	<ul style="list-style-type: none"> ● Fewer students/4 fewer staff to supervise, schedule, and conference ● 100% less special needs conferencing @ K level ● Avoids need for lottery, grandfathering, other divisive process for partial CI K cohort

2. Some Crow Island Kindergarten students attend another school with one or two EDK section(s) at Crow Island.

Some students welcomed at Hubbard Woods and Greeley Schools.

Facility Relief	Enrollment Relief	Schedule Relief	Staffing Relief	Other Relief
<ul style="list-style-type: none"> ● Opens up 0-1 classroom for special education or specials. ● Increases number of students eating lunch by 20 - 40 	<ul style="list-style-type: none"> ● ~35-55 fewer students (~10-15%) 	<ul style="list-style-type: none"> ● ~Four & one half-seven fewer hours of specials and staff to schedule ● adds 30 -60 min for KW classes @ K level 	<ul style="list-style-type: none"> ● Some reduction of traveling art and music teachers ● Reduces 0-1 teacher and 0-1 associate in bldg 	<ul style="list-style-type: none"> ● Fewer students/0-2 less staff to supervise, schedule, and confere ● ~50-75% less special needs conferencing @ K level

Kindergarten Variations; (current enrollment as of January 15, 2017)

Crow Island: 69 students Greeley: 31 students Hubbard Woods: 40 students