



**FUTURE
READY
D36**

Honoring our past.
Planning our future.

Board Update: February 27th, 2018



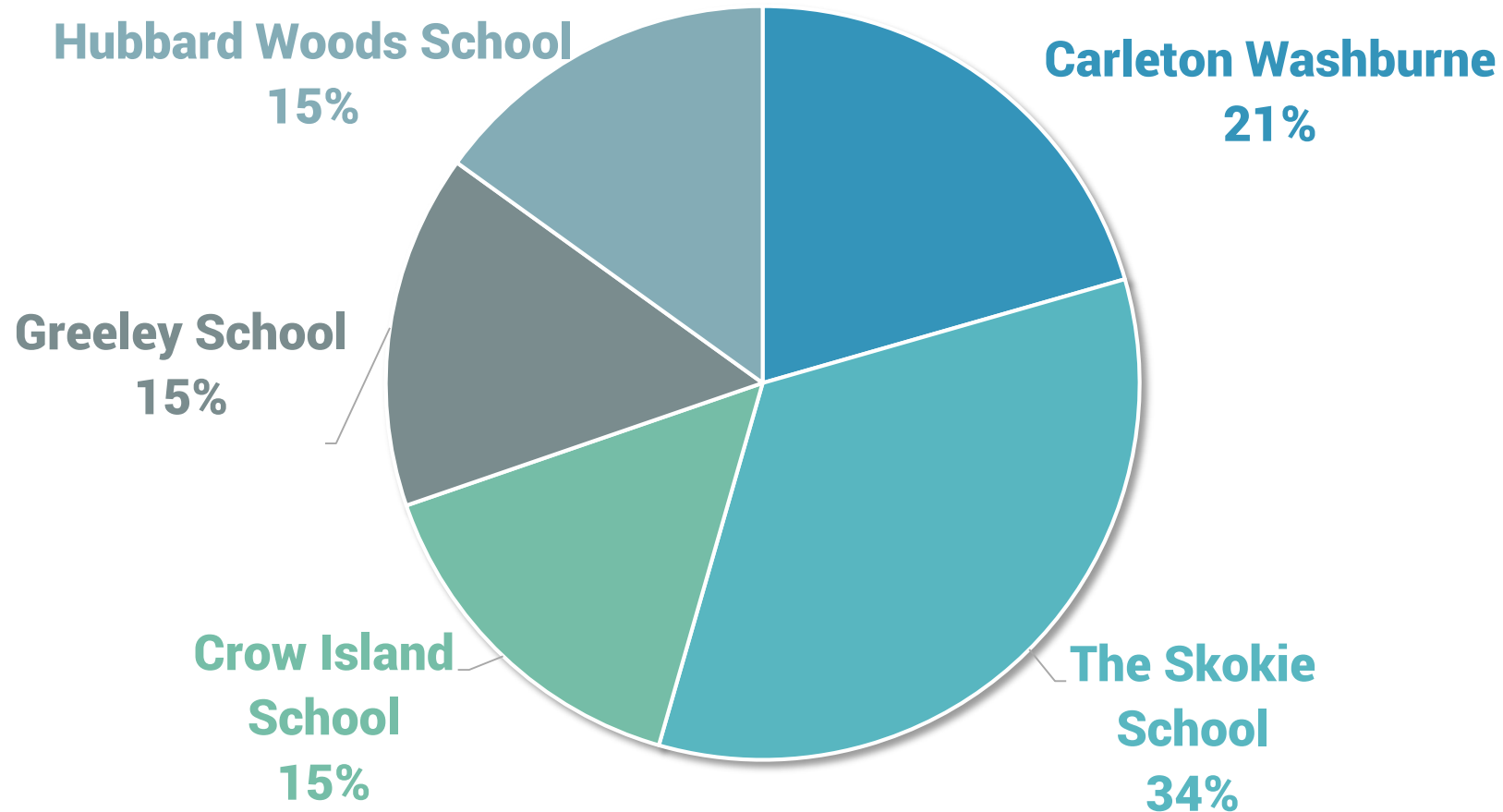
**FUTURE
READY
D36**

Honoring our past.
Planning our future.

Phase 1 Review: Physical Condition Assessment Items

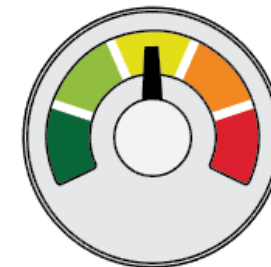
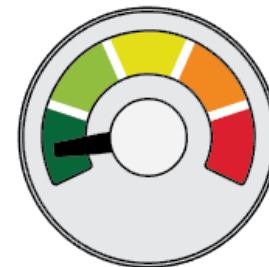
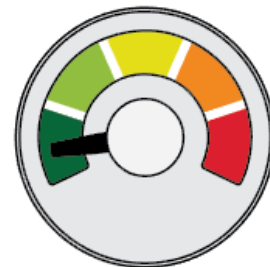
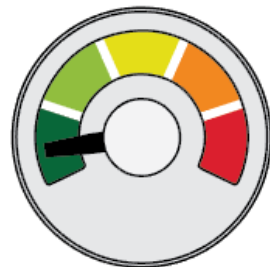
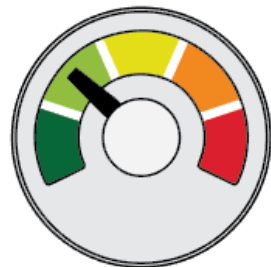
Phase 1 – Facility Assessment

DLR Group cataloged 1,364 items including the recent Decennial HLS Survey items previously identified.



Phase 1 – Facility Assessment

	Schools				
	Carleton Washburne	Crow Island	Hubbard Woods	Greeley School	Skokie School
Accessibility	27	25	16	15	31
Electrical	3	5	12	3	12
Equipment	25	37	26	15	40
Exterior	28	29	31	21	61
Finishes	100	63	82	61	210
Mechanical	16	8	12	12	8
Plumbing	2	9	4	5	9
Site	5	5	13	7	9
Health Life Safety	67	22	15	60	70
TOTAL	273	203	211	199	450





**FUTURE
READY
D36**

Honoring our past.
Planning our future.

Preliminary Cost Estimates

Survey-Findings Cost Estimation



Carleton Washburne School

- **DLR Provided List for Physical Assessment \$5,887,412**
- **Base HVAC: \$6,033**
 - HVAC Project: Upgrade Boiler Plant Area to HHW \$1,025,439
 - Eliminate HVAC repairs within Physical Assessment (\$1,019,406)
- **Geothermal HVAC: \$3,151,514**
 - Installation of Geothermal HVAC \$5,493,640
 - Eliminate HVAC repairs within the Physical Assessment (\$2,342,126)
- **Physical Assessment and Base HVAC: \$5,893,445**
- **Physical Assessment and HVAC Geothermal Upgrade: \$9,038,926**

Survey-Findings Cost Estimation



Crow Island School

- **DLR Provided List for Physical Assessment \$4,615,509**
- **Base HVAC: \$2,467,514**
 - HVAC Project: 2 Pipe Change Over System: \$3,598,998
 - Eliminate HVAC repairs within Physical Assessment (\$1,131,484)
- **Geothermal HVAC: \$2,566,634**
 - Installation of Geothermal HVAC \$3,997,250
 - Eliminate HVAC repairs within the Physical Assessment (\$1,430,616)
- **Physical Assessment and Base HVAC: \$7,083,023**
- **Physical Assessment and HVAC Geothermal Upgrade: \$7,182,143**

Survey-Findings Cost Estimation



Hubbard Woods School

- **DLR Provided List for Physical Assessment \$3,128,473**
- **Base HVAC: \$2,193,444**
 - HVAC Project: 2 Pipe Change Over System: \$2,848,650
 - Eliminate HVAC repairs within Physical Assessment (\$655,206)
- **Geothermal HVAC: \$2,398,891**
 - Installation of Geothermal HVAC \$3,058,145
 - Eliminate HVAC repairs within the Physical Assessment (\$659,254)
- **Physical Assessment and Base HVAC: \$5,321,917**
- **Physical Assessment and HVAC Geothermal Upgrade: \$5,527,364**

Survey-Findings Cost Estimation



Samual Sewall Greeley School

- **DLR Provided List for Physical Assessment \$3,377,841**
- **Base HVAC: \$2,438,931**
 - HVAC Project: 2 Pipe Change Over System, Auditorium and Gym AHU: \$2,438,931
 - Eliminate HVAC repairs within Physical Assessment (\$187,112)
- **Geothermal HVAC: N/A**
- **Physical Assessment and Base HVAC: \$5,629,660**

Survey-Findings Cost Estimation

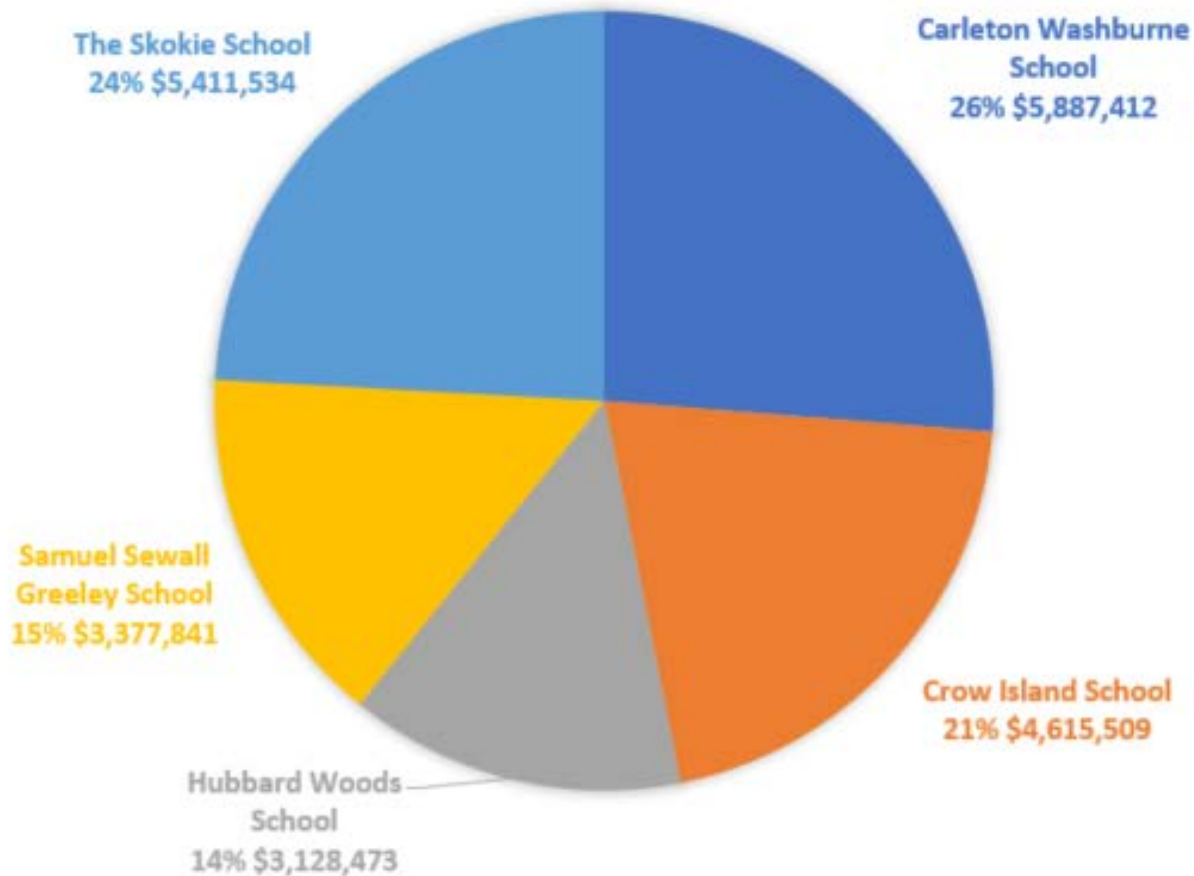


The Skokie School

- **DLR Provided List for Physical Assessment \$5,411,534**
- **HVAC Option 1: \$4,475,607**
 - HVAC Project: HHW Conversion and VRF: \$5,394,931
 - Eliminate HVAC repairs within Physical Assessment (\$1,019,324)
- **Geothermal HVAC: \$5,487,970**
 - Installation of Geothermal HVAC \$6,507,294
 - Eliminate HVAC repairs within the Physical Assessment (\$1,019,324)
- **Physical Assessment and Base HVAC: \$9,787,141**
- **Physical Assessment and HVAC Geothermal Upgrade: \$10,899,504**

Physical Assessment Cost Estimation

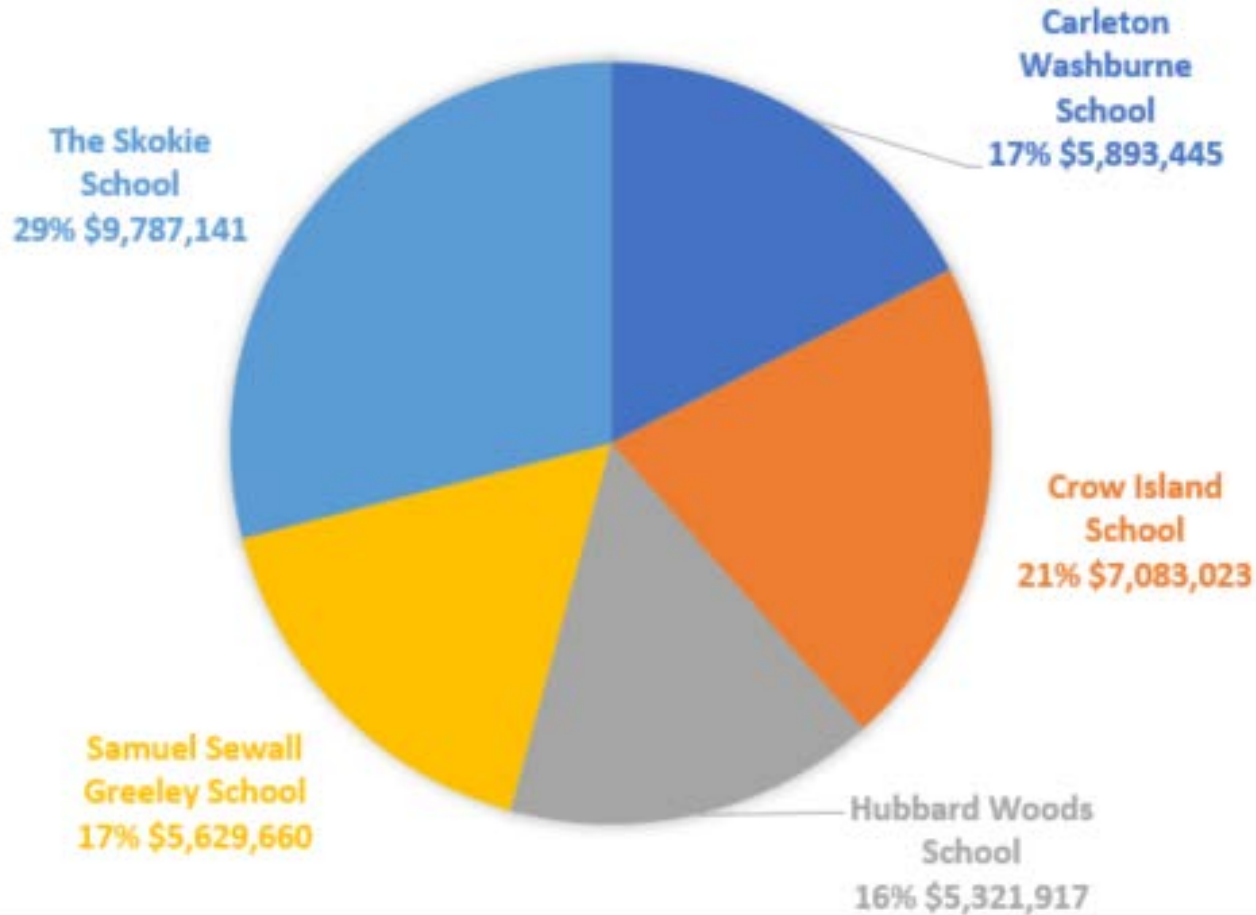
PHYSICAL ASSESSMENT



<u>School</u>	<u>Cost</u>
Carleton Washburne School	\$5,887,412
Crow Island School	\$4,615,509
Hubbard Woods School	\$3,128,473
Samuel Sewall Greeley School	\$3,377,841
The Skokie School	\$5,411,534
Total	\$22,420,769

Cost Estimation + Base HVAC

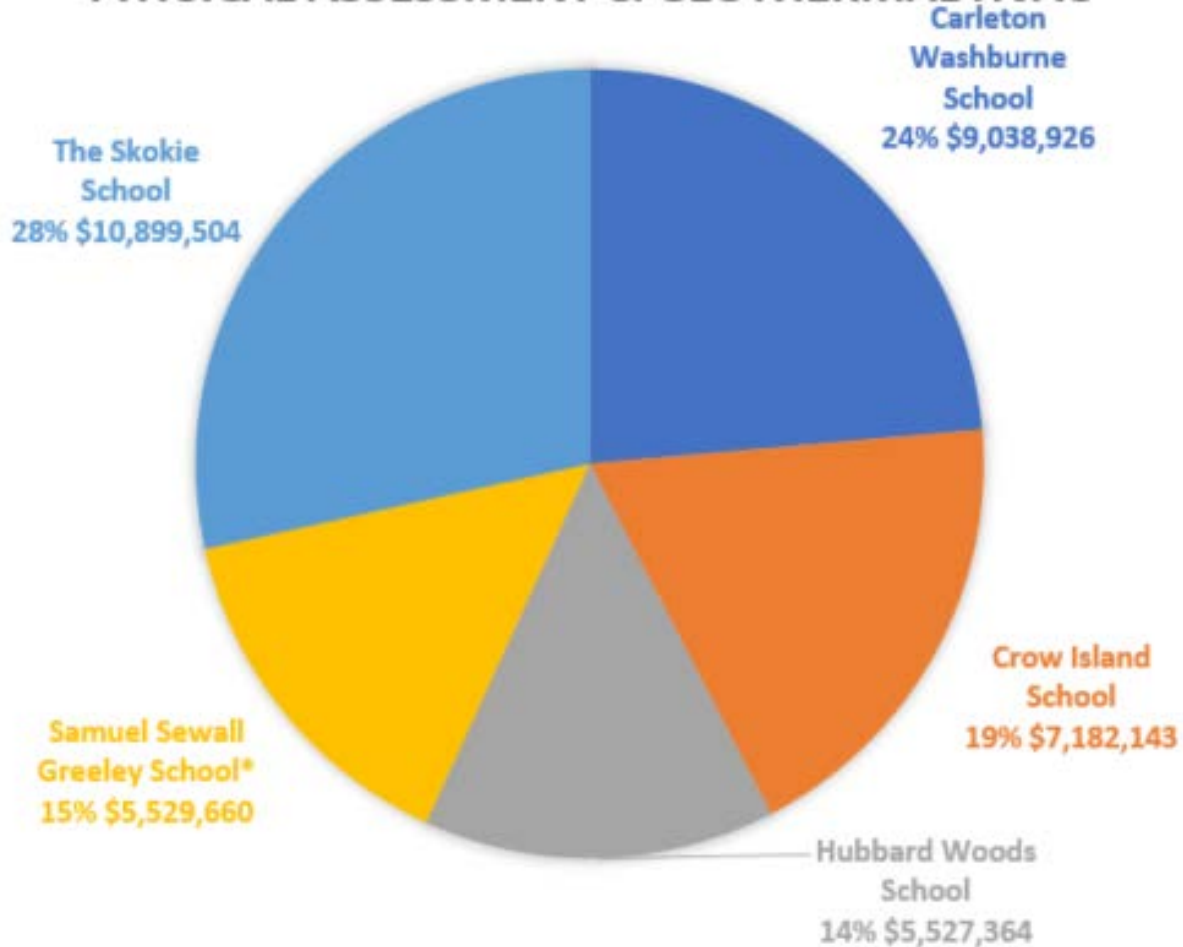
PHYSICAL ASSESSMENT & BASE HVAC



<u>School</u>	<u>Cost</u>
Carleton Washburne School	\$5,893,445
Crow Island School	\$7,083,023
Hubbard Woods School	\$5,321,917
Samuel Sewall Greeley School	\$5,629,660
The Skokie School	\$9,787,141
Total	\$33,715,186

Cost Estimation + Geothermal HVAC

PHYSICAL ASSESSMENT & GEOTHERMAL HVAC



<u>School</u>	<u>Cost</u>
Carleton Washburne School	\$9,038,926
Crow Island School	\$7,182,143
Hubbard Woods School	\$5,527,364
Samuel Sewall Greeley School*	\$5,629,660
The Skokie School	\$10,899,504
Total	\$38,277,597

* Greeley School Geothermal is N/A; Pie Chart reflects Base HVAC Price

Next Steps: Cost Estimation

1. DLR Group and Ameresco will work with the District to refine the individual assessment items into groups or phases. There are items that are necessary to complete in the near term, while some items can be repaired over time.
2. The overall net cost will be adjusted pending the options brought forward by the Core Team. In other words, if other renovations are considered any of the schools, you may not need to complete those renovations plus the assessment items as the renovation cost would cover both.



**FUTURE
READY
D36**

Honoring our past.
Planning our future.

Option Generation & Core Team Review

ENROLLMENT

Overall **declining** enrollment
Imbalance among 3 elementary schools' enrollments
Commitment to class size & **consistent** programming
Short-term solution: all Kindergarteners at Greeley & Hubbard Woods

FACILITIES

Cost/benefit of **maintaining** aging infrastructure
Greeley School, Hubbard Woods School, and the Skokie School are at or near **100 years old**
Updates, repairs, and replacements needed at all schools

VISION FOR TEACHING & LEARNING

Congruency with current needs of education
Forward thinking for the future needs
Continue to provide **engaging, progressive approach** to meet the needs of the current and **future generations of learners**

Meetings with Officials

The School District and DLR Group met with the Park District, Police Department and Zoning Officials from the Village of Winnetka.

- Zoning attributes of each school were tabulated and reviewed with the Village of Winnetka to help understand constraints for any potential construction/building changes.
- A meeting with the Police and Fire departments discussed priorities and safety and security.
- The Park District meeting reviewed partnership opportunities

Core Team: Option Generation

Each option will be categorized into three relative levels of impact:

1. **Maintain:** physical repairs and updates to ensure operational, accessible buildings with enrollment balancing or accommodations via construction.
2. **Enhance:** Maintain, and/or strategic upgrades to realize operational efficiencies with enrollment balancing or accommodations via construction and deliver future-ready learning opportunities more widely.
3. **Transform:** Maintain and Enhance, and/or significant changes to provide innovative, future-ready learning environments.



Qualifying Options / Tools

Cropper analyzed potential enrollment changes effected by several options.

DLR Group presented program modeling scenarios to illustrate how Teaching and Learning objectives embodied in Progressive 2.0 impact square footage at each campus, coupled with potential enrollment changes.

DLR Group presented an Options Modeling matrix that utilized the Community and Staff priorities to derive a weighted score for the options being considered.

March 12th

Options will be presented on March 12th according to their relative level of impact (Maintain, Enhance, Transform).

There is much work still to be done as the Core Team continues to refine and review the options to be presented!

March 12th & beyond

The Community will have a chance to provide input on March 12th and thereafter, so that the Core Team can make necessary refinements moving forward.

On March 12th: Live Polling, Public Comment

After March 12th: Online surveys; hosted “listening sessions” and/or presentations (Dates/Places/Times TBD)

April & beyond

Once the Community has had time to weigh in, the Core Team will have a series of meetings to make refinements to one or more options.

The second round of option(s) will be presented at another Special Board Meeting (TBD) this Spring.



**FUTURE
READY
D36**

Honoring our past.
Planning our future.

Questions?