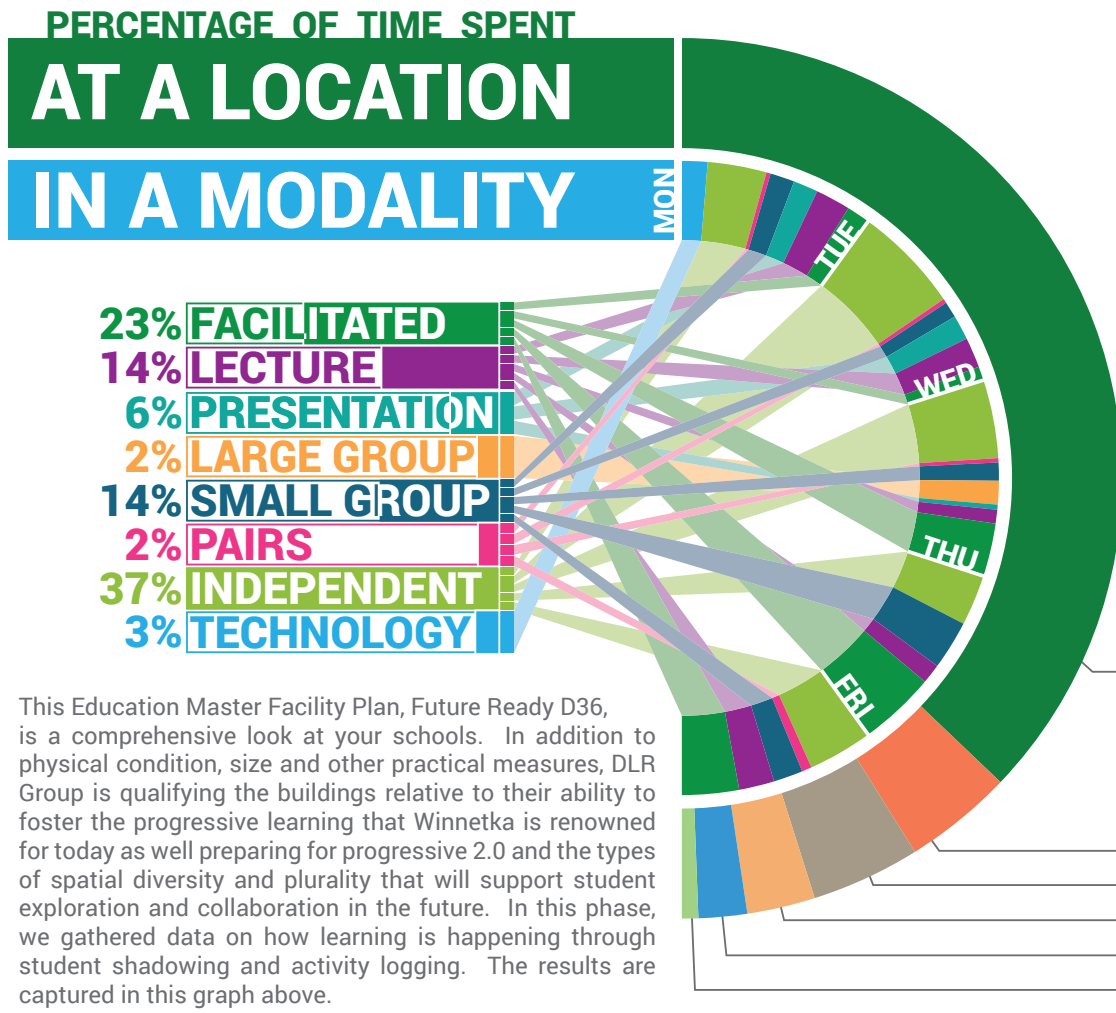




CARLETON WASHBURNE



Carleton Washburne School was built in 1967 with additions in 1982, 2007, and 2009 on a 6.5-acre site. The school's gross square footage is 155,034 square feet, with an optimal capacity of 798 students.



This Education Master Facility Plan, Future Ready D36, is a comprehensive look at your schools. In addition to physical condition, size and other practical measures, DLR Group is qualifying the buildings relative to their ability to foster the progressive learning that Winnetka is renowned for today as well preparing for progressive 2.0 and the types of spatial diversity and plurality that will support student exploration and collaboration in the future. In this phase, we gathered data on how learning is happening through student shadowing and activity logging. The results are captured in this graph above.

TOP 5 TAKE-AWAYS

LISTENING TOUR

- Lockers are too small
- Lacking space/resources for co-teaching
- Would like writable, interactive walls
- Improve comfort/function of courtyard
- Lacking flexible furniture

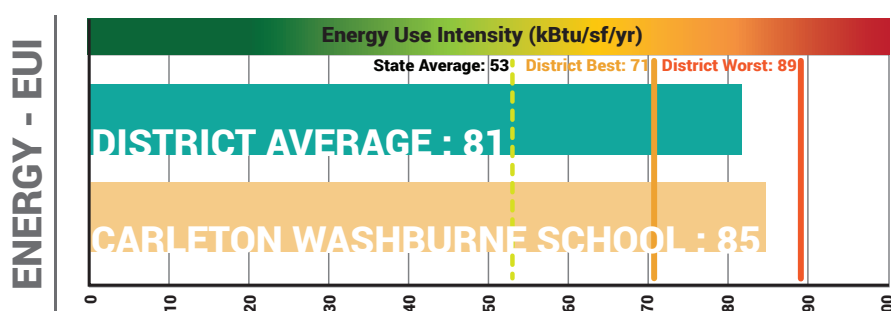
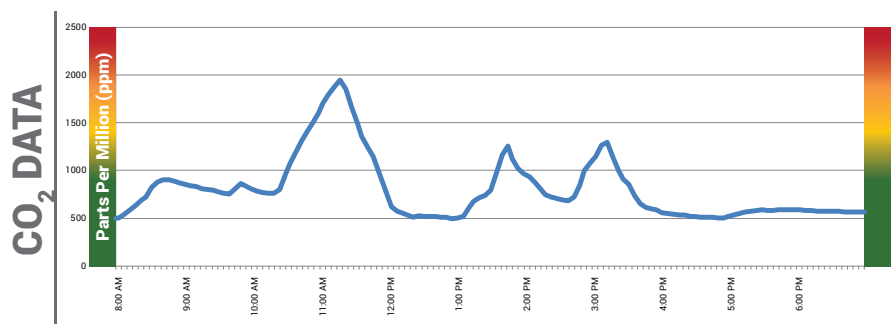
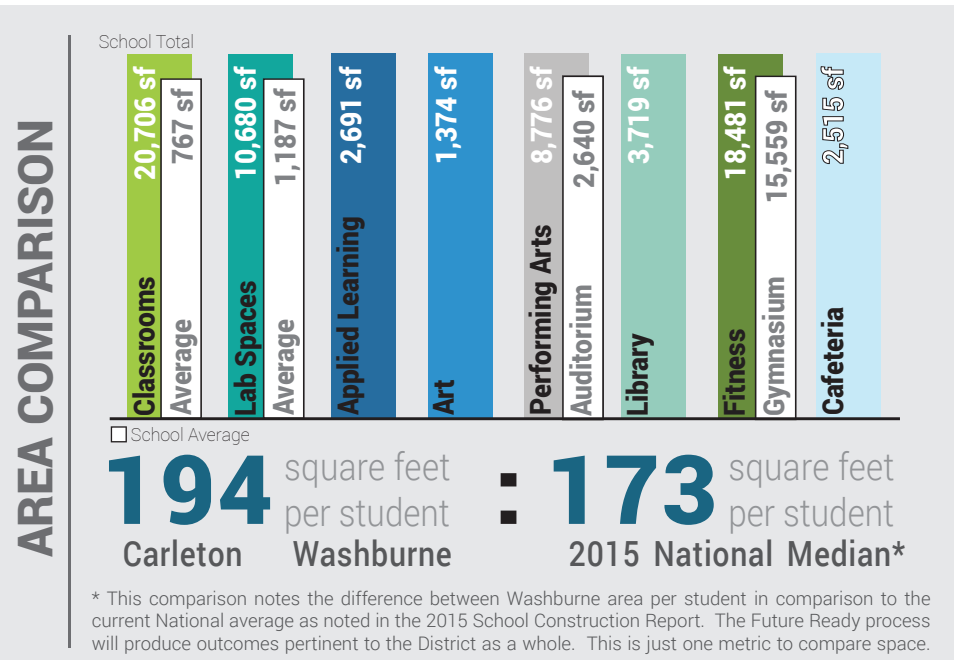
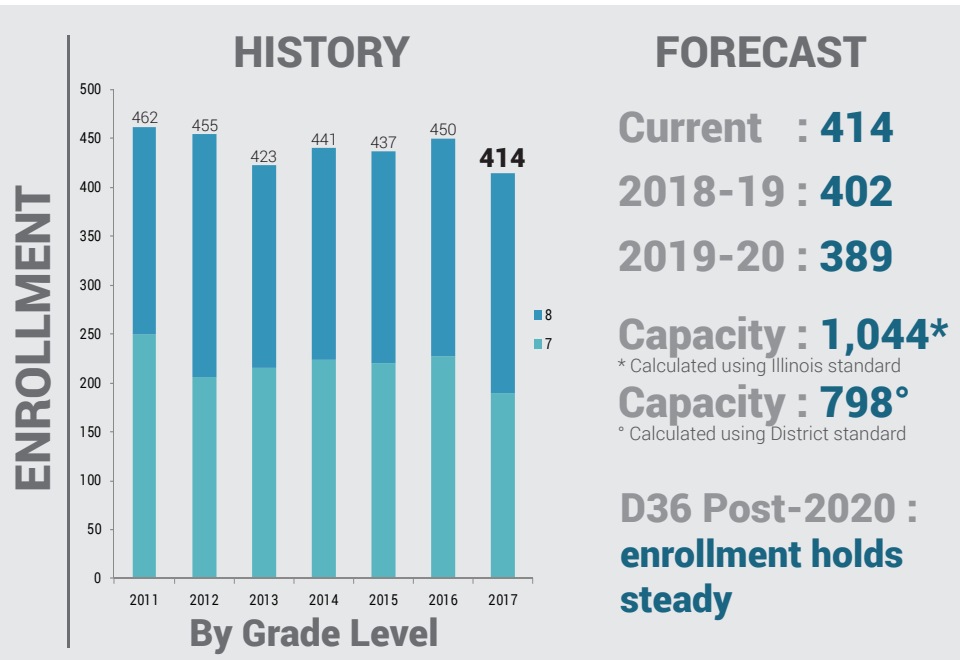
An all staff meeting (Listening Tour) was held at each school where faculty gave input about the strengths and weaknesses of the building. Architects and Engineers assessed each building noting deficiencies in material finish and code compliance.

74% CLASSROOM

- 8% CAFETERIA
- 8% GYM
- 5% PASSING
- 4% LIBRARY
- 1% OUTSIDE

PHYSICAL CONDITION

- Replace steam boilers
- 2 science classrooms are inaccessible
- Stairs require guardrails
- 3 air handling units are at useful life
- Rooftop equipment is at useful life



How is this information collected?

The DLR Group team collected data through the use of environmental sensors, District energy bills, and logging equipment. The sensors were placed in several rooms where they logged data from one to seven days. Spot measurements and multiple devices were then used to validate the results.

Did you know . . .

- Ventilation could be improved
- Proactive monitoring of air quality at Washburne is important to optimize the learning environment
- Classrooms are over-lit by artificial light

